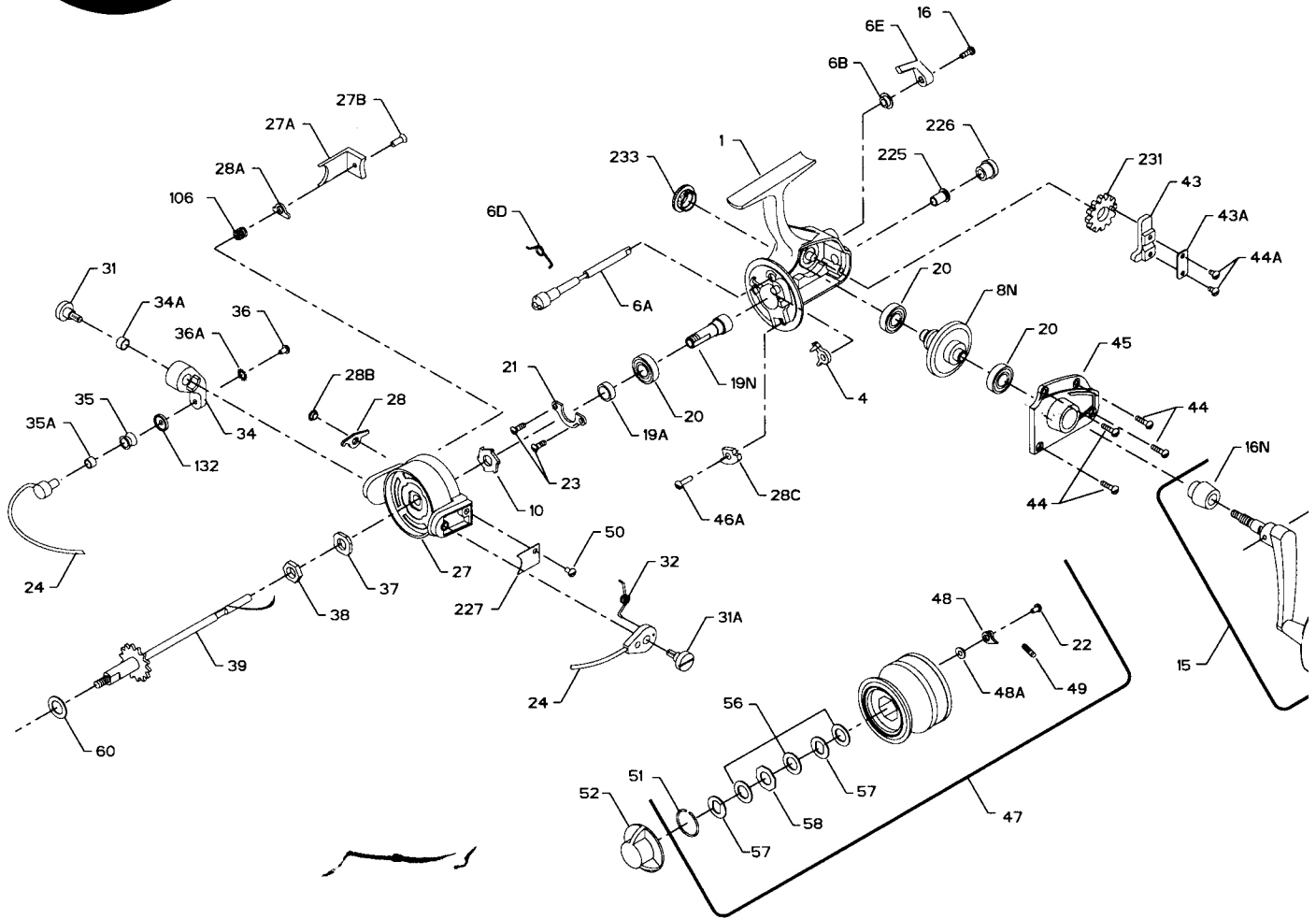




## PARTS AND PRICE LIST FOR MODEL 5500SS



Key No.	Part No.	Description	Price	Key No.	Part No.	Description	Price
1	1-5500	Housing	\$18.25	35A	35A-704	Line Roller Bushing	.45
4	4-450	Dog	.90	36	36-750	Bail Stud Screw	.45
6A	6A-450	Eccentric	1.15	36A	36A-750	Lock Washer	.45
6B	6B-750	Eccentric Liner	.45	37	37-450	Rotor Washer	.50
6D	6D-710	Eccentric Spring	.45	38	38-550	Rotor Nut	.50
6E	6E-750	Eccentric Lever	.90	39	39-550	Spool Shaft	8.80
8N	8N-5500	Main Gear	12.60	43	43-550	Crosswind Block	2.05
10	10-440	Ratchet	.70	43A	43A-550	Crosswind Block Plate	.50
15	15-5500	Handle (Complete)	13.15	44	44-704	Cover Screw (4 req.)	.45
16	16-910	Eccentric Screw	.45	44A	22-750	Crosswind Block Screw (2 req.)	.45
16N	16-5500	Handle Collar	1.95	45	45-5500	Housing Cover	3.25
19A	19A-550	Pinion Spacer	.80	46A	46A-704	Trip Cam Screw	.45
19N	19N-5500	Pinion	5.60	47	47-5500	Spool (Complete)	19.00
20	20-722	Ball Bearing	12.95	48	48-750	Click Tongue	.50
21	21-450	Bearing Cover	.90	48A	48A-750	Click Tongue Washer	.45
22	22-750	Spool Click Screw	.45	49	49-710	Click Tongue Spring	.45
23	23-750	Bearing Cover Screw (2 req.)	.45	50	50-712	Bail Spring Cover Screw	.50
24	24-5500	Bail Wire	6.75	51	51-710	Retaining Ring	.40
27	27-5500	Rotor	10.15	52	52-550	Drag Knob	5.05
27A	27A-5500	Bail Trip Cover	1.10	56	56-710	Drag Washer-HT100 (3 req.)	.70
27B	27B-420	Rotor End Screw	.50	57	57-710	Metal Keyed Washer (2 req.)	.45
28	28-5500	Trip Lever	1.70	58	58-710	Metal Washer (Octagon)	.45
28A	28A-440	Cam Lever	1.10	60	60-550	Thrust Washer (Teflon®)	.60
28B	28B-5500	Trip Lever Bushing	.90	106	106-5500	Rotor End Spring	.50
28C	28C-440	Trip Cam	.80	132	132-450	Roller Washer	.80
31	31-550	Bail Arm Screw	1.00	225	225-5500	Crosswind Shaft Bushing	1.10
31A	31A-450	Trip Arm Screw	.45	226	226-5500	Bushing Cap Screw	1.00
32	32-440	Bail Spring	.90	227	227-440	Bail Spring Cover	.70
34	34-450	Bail Arm	2.05	231	231-5500	Crosswind Gear	1.80
34A	34A-550	Bail Arm Bushing	.45	233	233-440	Bearing Cover	2.25
35	35-704	Line Roller	3.70				